



# Swatch Book

# Table of Contents

---



Click on any title in the Table of Contents to be redirected to it.

## 03 | Glossary

A Glossary of cover personalisation technologies and their abbreviations as well as default add-ons.

## 04 | Textiles

Textiles are perfect for anyone craving an aesthetically pleasing, durable linen product that is soft to the touch.

## 08 | Leatherettes

Leatherettes are made from synthetic materials making them vegan-friendly. A great choice for those craving the look and feel of real leather.

## 11 | Velvet & Suede Textiles

Rich and soft velvets in a selection of colours. Find your favourite velvet or suede finish here.

## 15 | Materials Available While Supplies Last

The materials in this section will be removed from our offer shortly and are available while supplies last. Please keep that in mind when selecting your cover material.

## 18 | Embossed Text Colours

Embossed Text foil colours are presented on C16 leatherette. Foil colours may differ slightly on the final product depending on the chosen leatherette base.

---

# Glossary

---

## Embossed Text (E)

This technology impresses a bookbinding font which can be left plain or embossed with your choice of coloured foil. Availability of this personalisation on a cover material is marked with an (E).

**Disclaimer:** for exact availability double-check in the nShop. In some cases, certain material batches may not allow for this personalisation.

## Laser Etch (L)

This technology exposes the base layer of the leatherette. Due to its invasive character, this technology is available on selected materials. Availability of this personalisation on a cover material is marked with an (L).

**Disclaimer:** for exact availability double-check in the nShop. In some cases, certain material batches may not allow for this personalisation.

## UV Print (UV)

This technology prints a layer on the chosen material. The colour of each UV print is carefully selected to best match each material's colour. Availability of this personalisation on a cover material is marked with a (UV).

**Disclaimer:** for exact availability double-check in the nShop. In some cases, certain material batches may not allow for this personalisation.

## Ribbons

Ribbons are matched the interior colour of boxes at default. They cannot be mixes and matched.

### IMPORTANT:



The availability of personalisation options and materials must be checked in the nShop.

# Textiles



**A10** | UV • L

Polished Antique Gold Textile



**A11** | L

Polished Onyx Textile



**A12** | L

Polished Burgundy Textile



**A19** | UV • L

Brown Plain Textile



**A37** | UV • L

Smoke Grey Plain Textile



**A38** | UV • L

Navy Plain Textile



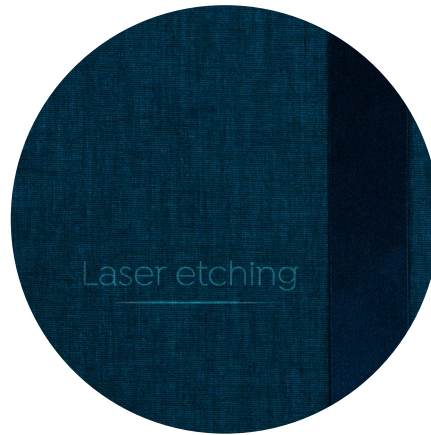
# Textiles

---



**A39** | L

Black Plain Textile



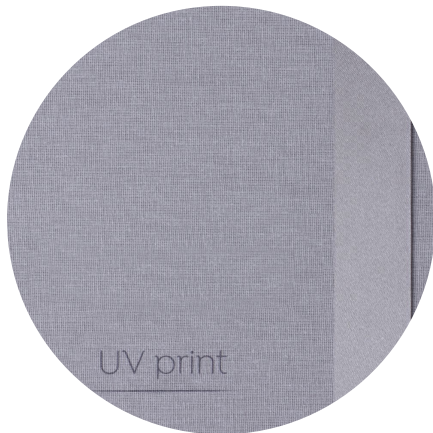
**H12** | L

Midnight Sky Duo Textile



**H14** | L

Charcoal Grey Duo Textile



**A56** | UV

Mist Grey Plain Textile



**A25**

Wheat Duo-weave Textile



**A27** | UV

Frosty Blue Duo-weave Textile

# Textiles

---



**A28 | UV**

Cold Grey Duo-weave Textile



**A30 | UV**

Warm Grey Duo-weave Textile



**A31 | UV**

Linen Plain Textile



**A47 | UV**

Baby Pink Plain Textile



**A48 | UV**

Blush Pink Plain Textile



**A49 | UV**

Mint Green Plain Textile



# Textiles

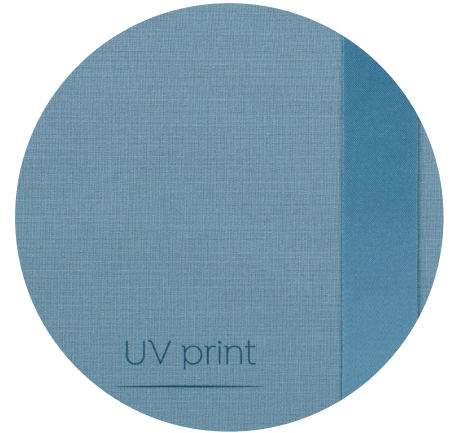
---



**A50 | UV**  
Sage Green Plain Textile



**A51 | UV**  
Baby Blue Plain Textile



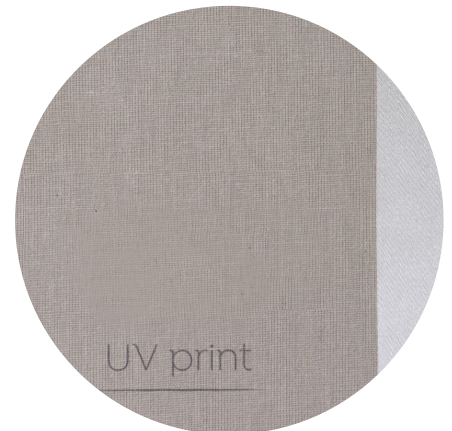
**A52 | UV**  
Pigeon Blue Plain Textile



**A53 | UV**  
Dune Duo-weave Textile



**A54 | UV**  
Burlap Duo-weave Textile



**A55 | UV**  
Cappuccino Plain Textile

# Leatherettes



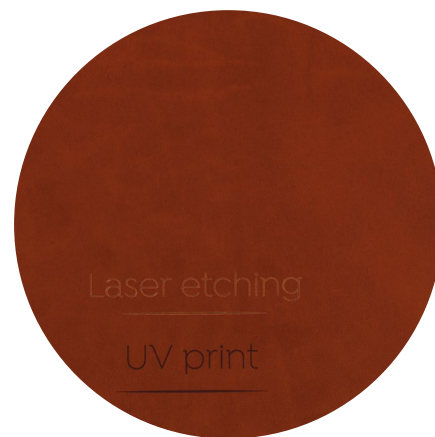
**C5** | E • UV • L

Raven Black Vintage Leatherette



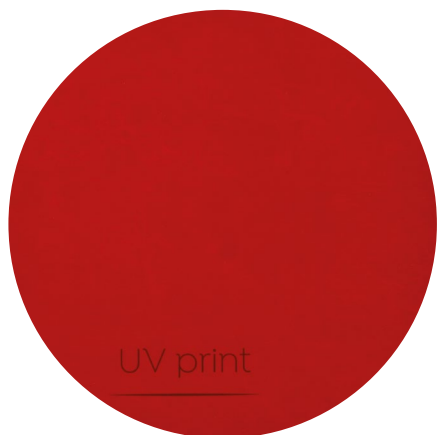
**C10** | E • UV • L

Dark Brown Vintage Leatherette



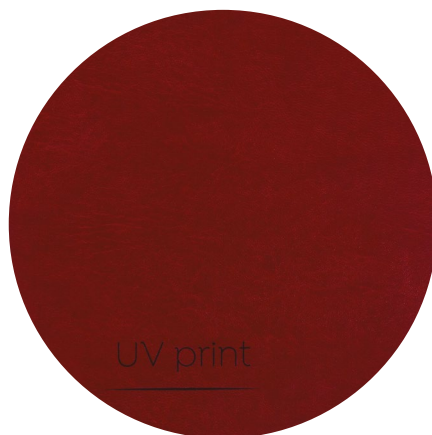
**C12** | E • UV • L

Chestnut Vintage Leatherette



**F2** | E • UV

Red Vintage Leatherette



**C15** | E • UV

Cranberry Vintage Leatherette

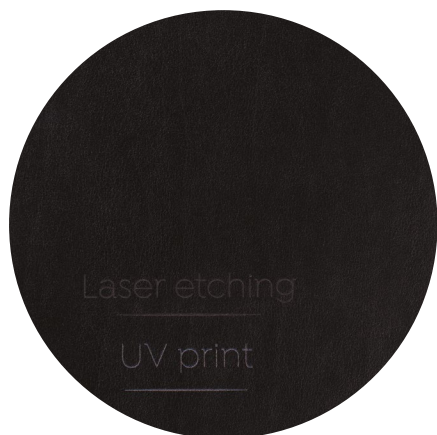


**D1** | E • UV • L

Brown Vintage Leatherette



# Leatherettes



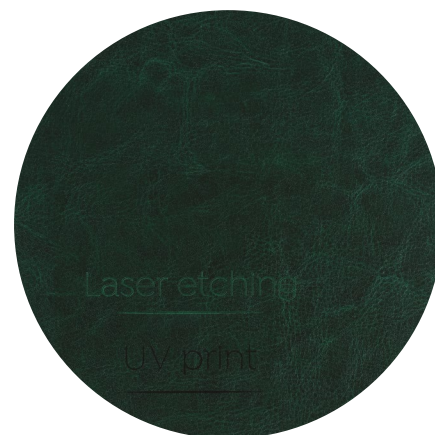
**E4** | E • UV • L

Pitch Black Matte Leatherette



**E5** | E • UV • L

Red Wine Matte Leatherette



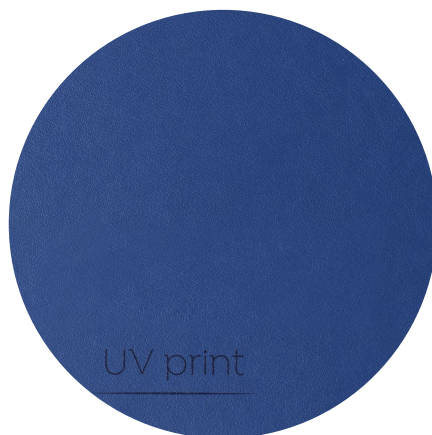
**G2** | UV • L

Hunter Green Vintage Leatherette



**E8** | E • UV

Stone Grey Matte Leatherette



**E9** | E • UV

Navy Matte Leatherette



**C16** | E • UV

Oatmeal Matte Leatherette

# Leatherettes



**F3 | E • UV**

Ivory Vintage Leatherette



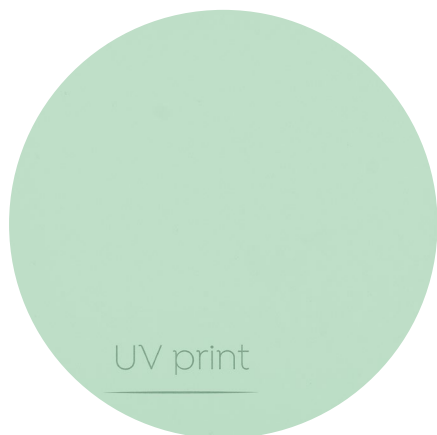
**J28 | E • UV • L**

Smoke Grey Matte Leatherette



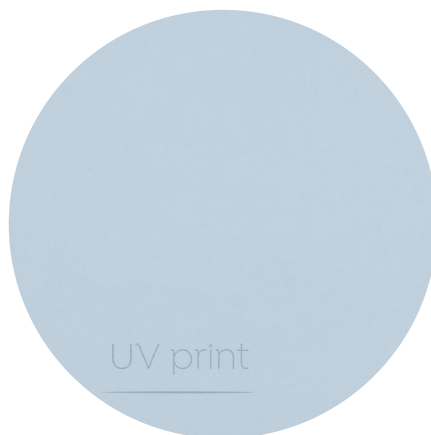
**J47 | E • UV**

Baby Pink Matte Leatherette



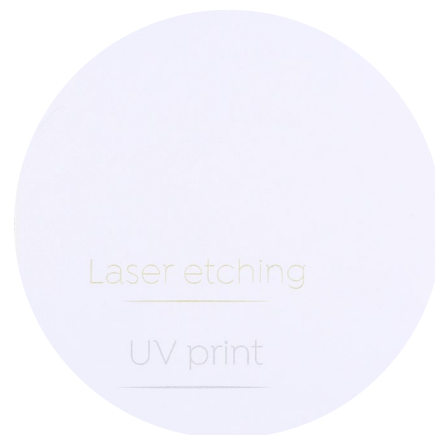
**J49 | E • UV**

Mint Green Matte Leatherette



**J51 | E • UV**

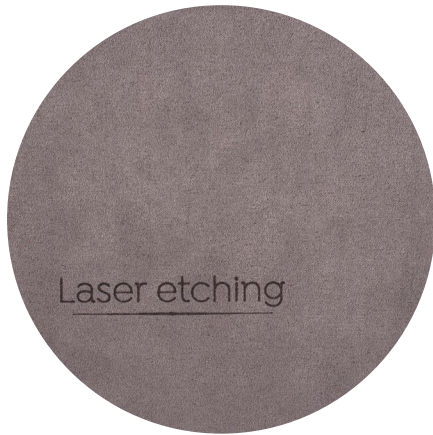
Baby Blue Matte Leatherette



**F1 | E • UV • L**

Frothy White Matte Leatherette

# Velvet & Suede Textiles



**V4 | L**

Iron Grey Suede Textile



**V6 | L**

Deep Sea Blue Velvet Textile



**V7 | L**

Emerald Green Velvet Textile



**V8 | L**

Tapue Brown Velvet Textile



**V9 | L**

Dijon Yellow Velvet Textile



**V13 | L**

Cardinal Red Suede Textile

# Velvet & Suede Textiles



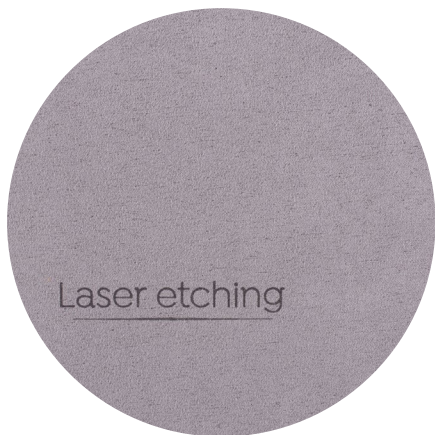
**V1** | L

Dove Grey Suede Texture



**V2** | L

Silver Grey Velvet Texture



**V3** | L

Elephant Grey Suede Texture



**V11** | L

Soft Rose Pink Velvet Texture



**V14** | L

Off White Velvet Texture



**V15** | L

Ecru Beige Velvet Texture



# Velvet & Suede Textiles



**V16 | L**  
Turtle Dove Velvet Texture



**V17 | L**  
Soft Lilac Velvet Texture



**V18 | L**  
Camel Brown Velvet Texture



**V19**  
Polished Bronze Velvet Texture



**V20 | L**  
Crimson Red Velvet Texture



**V21 | L**  
Burgundy Red Velvet Texture

# Velvet & Suede Textiles



**V22 | L**  
Robin Egg Velvet Textile



**V23 | L**  
Aquamarine Blue Velvet Textile



**V24 | L**  
Royal Blue Velvet Textile



**V25 | L**  
Licorice Black Velvet Textile



**V26**  
Anthracite Black Suede Textile  
Available for box interiors only,  
not suitable as a cover material.

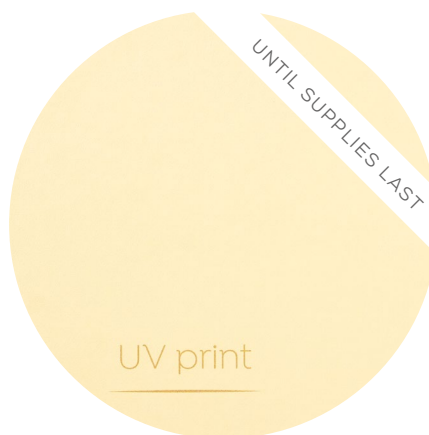
## Materials Available While Supplies Last

Confirm availability in nShop before ordering



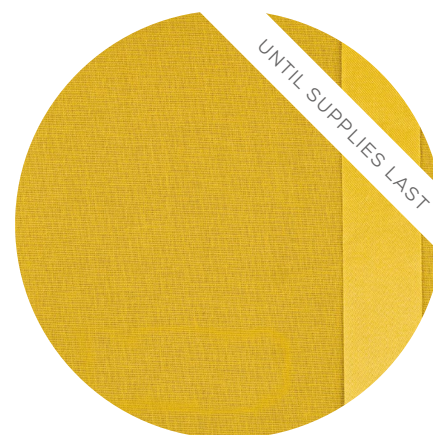
**V12 | L**

Fandango Pink Suede Textile



**C3 | E • UV**

Champagne Matte Leatherette



**A17 | none**

Sunflower Plain Textile



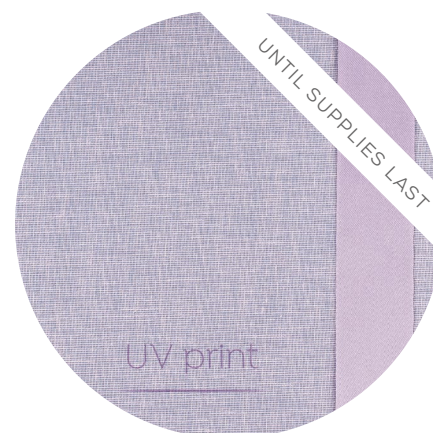
**H6 | UV**

Yellow-Orange Duo Textile



**E11 | E • UV • L**

Sunny Yellow Matte Leatherette



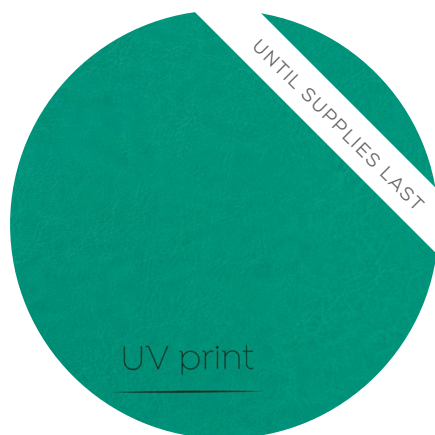
**H7 | UV**

Lilac Duo Textile



## Materials Available While Supplies Last

Confirm availability in nShop before ordering



**C21 | E • UV**

Turquoise Vintage Leatherette



**C22 | E • UV**

Fuchsia Vintage Leatherette



**E6 | E • UV • L**

Walnut Matte Leatherette



**C13 | E • UV**

Ginger Vintage Leatherette



**A21 | UV**

Lime Green Plain Textile



**A40 | UV • L**

Sandy Plain Textile



**Materials Available While Supplies Last**  
Confirm availability in nShop before ordering



**E7 | E•UV•L**  
Red Oak Matte Leatherette

# Embossed Text Colours

---

Embossed Text foil colours are presented on C16 leatherette.

Foil colours may differ slightly on the final product depending on the chosen leatherette base.



**KO** | None



**FL1** | Matte White



**FL2** | Matte Grey



**FL3** | Metallic Silver



**FL4** | Metallic Gold



**FL5** | Metallic Rose Gold

# Embossed Text Colours

---

Embossed Text foil colours are presented on C16 leatherette.

Foil colours may differ slightly on the final product depending on the chosen leatherette base.



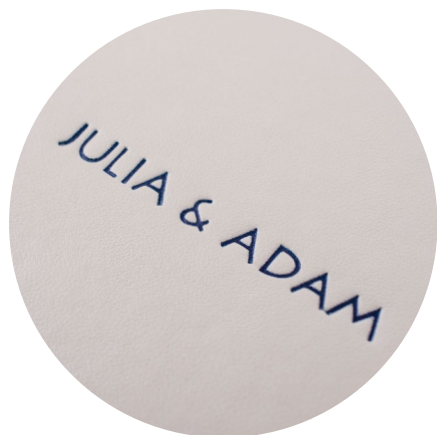
**FL6** | Metallic Red



**FL7** | Matte Hot Pink



**FL8** | Matte Brown



**FL9** | Matte Navy



**FL10** | Matte Spring Green



**FL11** | Matte Black